

Research Article

Investigation of the baffle effects on reactor of fluidized beds with circulating flow along with ozone decomposition

E. Zohrabi¹, A.R.Zahedipoor², Sh.Eslami¹,
M.Shahamatpoor¹ and S.R.Mehrnia³

¹Department of Chemical Engineering,
Mahshahr Branch, Islamic Azad University, Mahshahr, Iran

²Department of Chemical Engineering, Gachsaran Branch,
Islamic Azad University, Gachsaran, Iran

³Department of Geology, Payam Noor University (PNU), Tehran, Iran

ABSTRACT

Fluidized beds with circulating flow, as the gas-solid contactors, are widely used in physical and chemical processes such as drying of solids, pharmaceutical industries, coating solids, granulation, and water and wastewater treatment industry. In this study, numerical simulation using FLUENT software was conducted to investigate the distribution of solid particles of fluidized beds with circulating flow. To conduct simulation, Eulerian-Eulerian with the help of kinetic theory of granular flow was used. Various values of particle-wall elastic modulus were studied. After selecting the appropriate model to predict the particles flow behavior, ozone decomposition reaction was carried out in fluidized beds with circulating flow and they were solved by FLUENT software. The results showed that the location of ring baffles has the greatest impact on fluctuation of system pressure drop, and adverse mix of gas and increase of solid materials are tangible by baffles, resulting from regulation of bed and accumulation of circulating particles beside the wall.

Keywords: fluidized beds with circulating flow, hydrodynamic, kinetic theory of granular flow, chemical reaction.

1. INTRODUCTION

Baffles are vertical blades that are installed in the interior wall of reactor that change the direction fluid turbulence or cease it. Installing baffles increases the disturbance and displacement of fluid inside the riser, and the spiral movement of fluid inside the riser can be observed. The reason that solids fall is gravity baffle not only prevents the movement of particles to downside, but also it increases the the flow of mixed gas. Another task of baffles is bearing the weight of pipes and preventing them from bending when they are expanded and moved. What makes a complete distinction between this type of baffle and Vertical

baffles are a complete radial flow. Thus, ozone decomposition reaction is a heterogeneous reaction (non-uniform), the baffle not only has impact on distribution of solids but also it has effect in ozone decomposition in reactor of fluidized beds with circulating flow. These effects of baffle on reactor performance tested by the concentration of ozone output between reactors have been compared with reactors with baffle and reactors without baffle. Leonhard Euler (1783-1707) proposed the Euler equations stating the law of conservation of momentum and mass in non-viscous fluids and he stated the theory of rate potential theory for the

first time. In fact, it is the base of Computational Fluid Dynamics, but Navier-Stokes equations are so complex and interdependent that their solutions for real fluids were not possible in 1960s and 1970s, even with computer. Jiang et al (1991) method was used to measure the ozone concentration in this study. Both axial and radial ozone concentrations profiles were provided. The baffle effects on reactor performance were examined under the different solid gas velocity and circulating flow velocity [1]. Benjapen et al (2010) examined the non-uniform distribution of solid particles in fluidized beds with circulating in two-dimensional form. They used Eulerian-Eulerian approach in their simulation and solved the ruling equations using FLUENT 6.1 software. The results showed that configuration of baffle ring had significant effect on reactive system [4]. Syamelal et al (1987) investigated the fluidized beds with circulating flow using two-phase fluid model (Euler-Euler) that includes the kinetic theory of granular flows. They also studied the function modeling parameters of drag and solid

shear viscosity as well as Granular temperature to optimize CFD model's predictions. The simulation results showed an important impact of functions of drag and solid shear viscosity on model predictions, particularly indiluted areas [2]. Zhang and Arastou Pour showed that larger particles have a greater tendency to accumulate near the wall than smaller particles. Therefore, the small particles used in modeling can reduce the effect of large particles accumulation near the wall. Solids flux was at its maximum near the center, and the downside flow of solid particles was predicted near the wall [3].

2- Creating geometric shape

For multiphase O'Leary computations, algorithms PCA-SIMPLE software uses [13] pressure-velocity coupling. PC-SIMPLE is expansion or developed SIMPLE [12] for multiphase flows. Velocities are coupled in the phases and solved, separately. Multi-mesh plan is used based on density 2 [6], to solve the vector equation resulting from velocity components of all phases simultaneously.

3. Ruling equations

Continuity equation :Gas phase

$$\frac{\partial(\epsilon_g \rho_g)}{\partial t} + \nabla \cdot (\epsilon_g \rho_g \vec{v}_g) = 0$$

Solid phase

$$\frac{\partial(\epsilon_s \rho_s)}{\partial t} + \nabla \cdot (\epsilon_s \rho_s \vec{v}_s) = 0$$

Momentum equations :Gas phase:

$$\frac{\partial(\epsilon_g \rho_g \vec{v}_g)}{\partial t} + \nabla \cdot (\epsilon_g \rho_g (\vec{v}_g \otimes \vec{v}_g)) = -\epsilon_g \nabla p + \nabla \cdot \bar{\tau}_g + \epsilon_g \rho_g \vec{g} + K_{gs} (\vec{v}_g - \vec{v}_s)$$

Solid phase

$$\frac{\partial(\epsilon_s \rho_s \vec{v}_s)}{\partial t} + \nabla \cdot (\epsilon_s \rho_s (\vec{v}_s \otimes \vec{v}_s)) = -\epsilon_s \nabla p + \nabla \cdot \bar{p}_s + \nabla \cdot \bar{\tau}_s + \epsilon_s \rho_s \vec{g} + K_{gs} (\vec{v}_g - \vec{v}_s)$$

Continuity equation :The volume fraction of each phase is calculated using continuity equation:

$$\frac{1}{\rho_{iq}} \left(\frac{\partial}{\partial t} (\alpha_q \rho_q) \right) + (\alpha_q \rho_q \vec{v}_q) = \sum_{p=1}^n (\dot{m}_{pq} - \dot{m}_{qp})$$

Momentum exchange coefficient (the drag model) presented by Siamelal et al [7] is as follows:

Drag model equations:

$$f = \frac{C_D Re_s \alpha_1}{24 v_{r,s}^2}$$

$$C_D = \left(0.63 + \frac{4.8}{\sqrt{\frac{Re_s}{v_{r,s}}}} \right)^2$$

This model is based on the measurement of particles in the fluidized beds or sedimentation stated as a function of volume fraction and Reynolds number:

$$Re_s = \frac{\rho_1 d_s |\vec{v}_s - \vec{v}_1|}{\mu_1}$$

Fluid-solid exchange coefficient is as follows:

$$K_{s,f} = \frac{3 \alpha_s \alpha_1 \rho_1}{4 v_{r,s}^2 d_s} C_D \left(\frac{Re_s}{v_{r,s}} \right) |\vec{v}_s - \vec{v}_1|$$

$v_{r,s}$ is the limit velocity equation for solid phase

$$v_{r,s} = 0.5 \left(A - 0.06 Re_s + \sqrt{(0.06 Re_s)^2 + 0.12 Re_s} \right)$$

With $A = a_1^{4.14}$

And $B = 0.8 a_1^{1.28} \alpha_1 \leq 0.85$

And $B = \alpha_1^{2.85} \alpha_1 > 0.85$

Radial distribution function :It uses the following equation for one solid phase [8]:

$$g_c = \left[1 - \left(\frac{a_s}{a_{s,max}} \right)^{\frac{1}{3}} \right]^{-1}$$

The first step in the simulation is making the geometry of the system and its mesh. We used Gambit software to draw geometry shape of the bed. Bed height was 6.1 m and its width was 0.076 m, that there is 46 mm of gap for entrance of gas end down of bed.

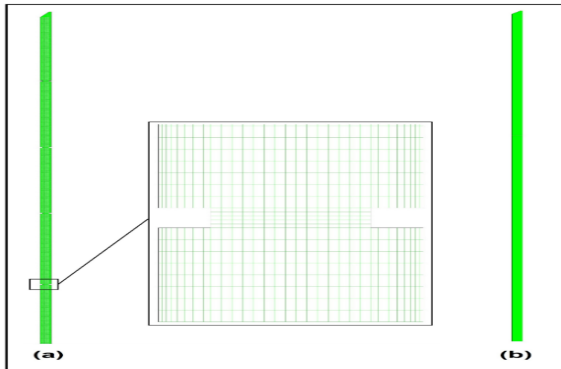


Figure 1- bed geometry

Validation of the results of system without baffle4

In this section, the aims to ensure the accuracy of the results obtained by simulation of system without baffle. For this purpose, the results of particle volume fraction and velocity of particles in a specified height were compared with experimental data. In this paper, the experimental data obtained by Liu et al [9,10,11] were used. Figure 2 shows the comparisons of the results of simulation of volume fraction of particles in the height of 3.8 m with experimental result. According to the Figure, behavior of particles has good match or consistency based on simulation and experimental results. Based on the Figure, simulation results show that the most low volume fraction of particles is in the middle of bed, and as we go toward wall, the volume fraction of particles will increase. This result seems to be

natural because in sides of the wall compared with its center, the velocity of particles decreases due to the friction, and there is relatively high friction in the side of wall due to dispersion coefficient of 0.5 and particles tend to accumulate in wall side.

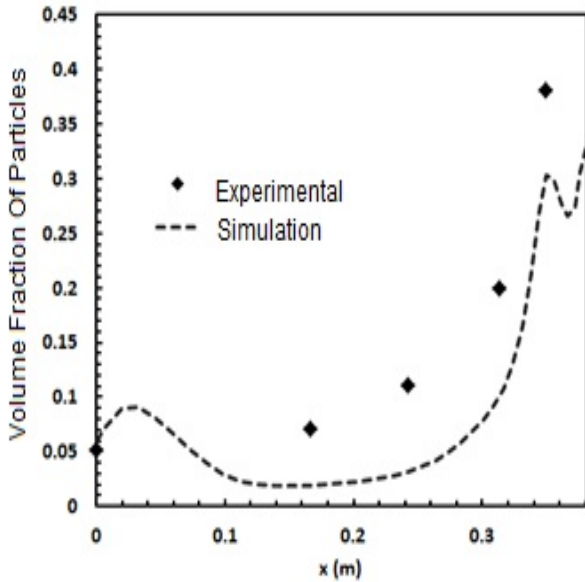


Figure 2- comparison of the average time of particles volume fraction resulting from simulation with experimental results at a height of 3.8 m from the bed

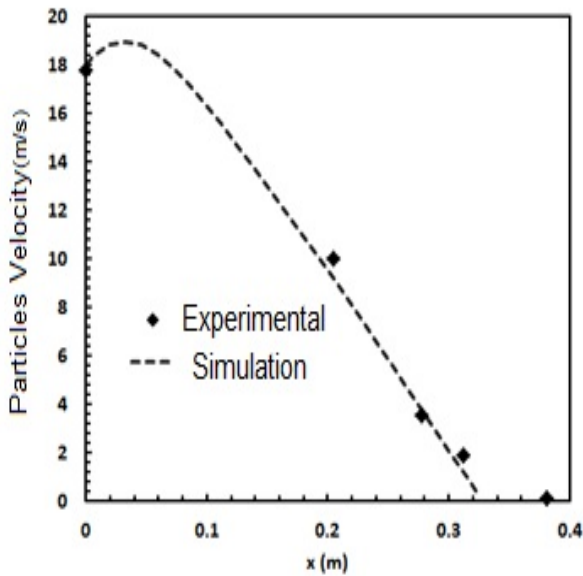


Figure 3- comparison of the average time of particles velocity resulting from simulation with experimental results at a height of 3.8 m from the bed

5. The volume fraction of particles in baffled and non-baffled systems

In the baffled system, the volume fraction of particles has high concentration in the side of wall than its center in the entrance area. As we move from entrance area to upper side to reach the first baffle, it is seen that the behavior of particles is relatively uniform, but as we move from bottom to upper part, its concentration decreases slightly. The volume fraction of particles in the side of wall, after passing through the baffle is severely reduced, since the baffle acts as a barrier for movement of particles in the side of wall.

Based on the Figure, volume fraction of particles in the next baffles decreases compared with previous baffle in the side of wall, which leads to more uniform distribution of volume fraction of particles. According to the Figure, the contour of the particles volume fraction in non-baffle system show that accumulation of particles is very high in the side of wall, but it suddenly decreases. In general, by comparing two systems, one can understand the behavior of particles in non-baffled system is relatively uniform, but in the baffled areas there is the highest non-uniformity of volume fraction of particles due to contact of particles with baffle, leading to irregularity in that area.

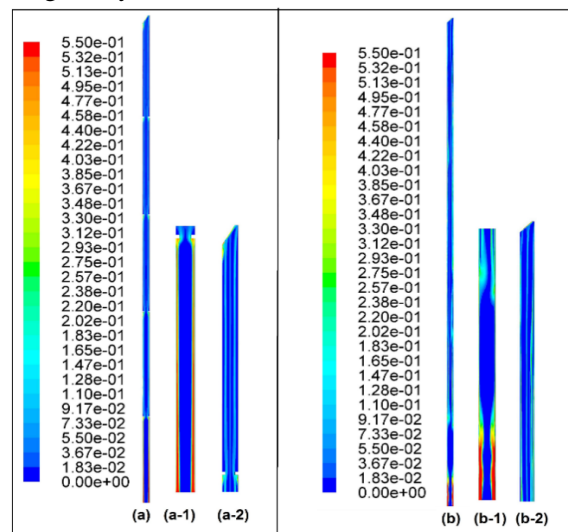


Figure 4-Contour of solid volume fraction (Figure a is baffled riser and (a-1) is the entrance section of rise

and (a-2) is outlet section of riser and figure b is non-baffled riser and (b-1) is the entrance section of riser and (b-2) is the outlet section of the riser
 As mentioned, the volume fraction of particles in the baffled system is higher in the side of wall, but as we go far from baffles, it is reduces in proximity and the volume fraction of particles difference is reduced between side and center of wall.

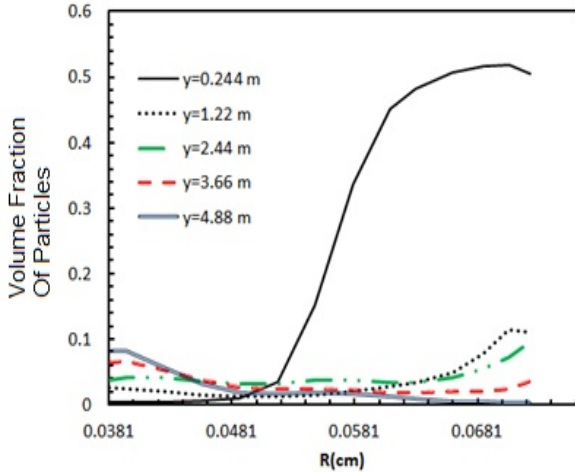


Figure 5- The average time of volume fraction of particles at different heights in baffled system

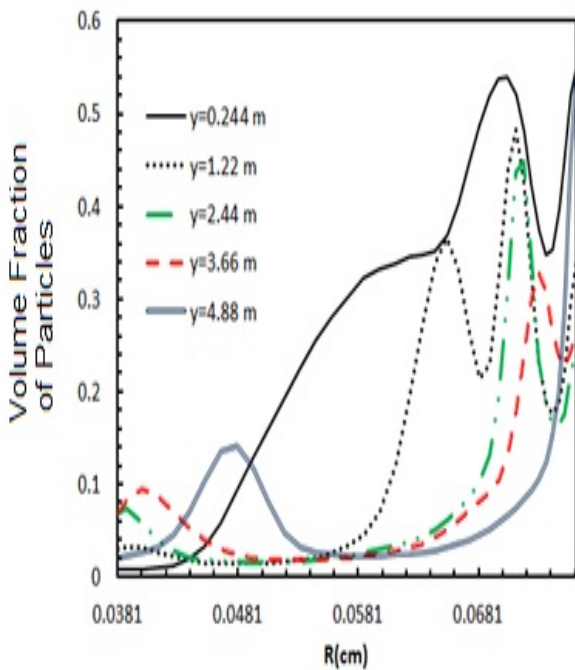


Figure 6- The average time of volume fraction of particles at different heights in non-baffled system

However, according to Figure 6, in the non-baffled, the particle volume fraction in the side of wall is higher than its center in all selected heights, and as height increases this behavior does not change.

6. Mole fraction of ozone

Figure shows five sections of the riser that indicate the motion of particles in the walls and the center. In its center, there is the maximum mole fraction of ozone that is particles mole fraction of ozone is very lower in the walls than center of bed, and particles mole fraction of ozone is constantly ascending. Therefore, the baffled system is better than non-baffles system since baffle prevents particles backing to the bottom of the riser.

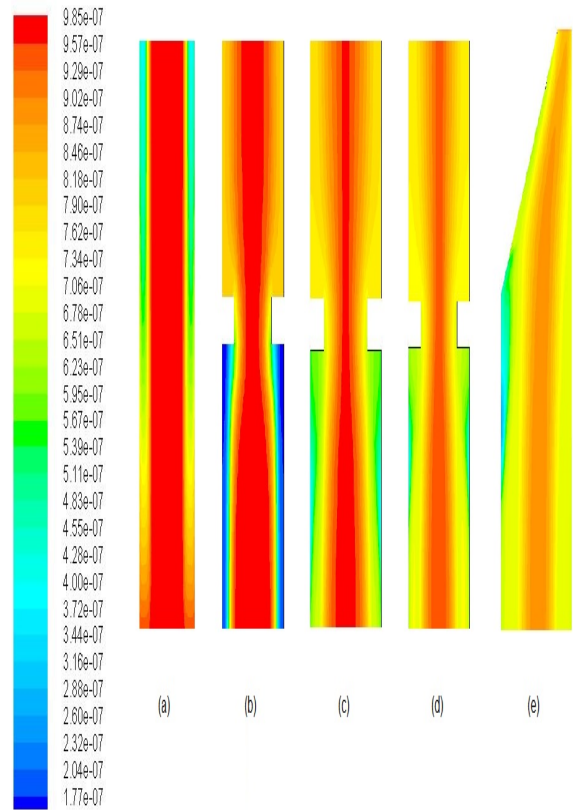


Figure 7- Comparison of the contour of the ozone mole fraction of baffled system ((a) the entrance section of riser (b) and the first baffle and (c) the second baffle and (d) the third baffle and (e) the outlet section of riser

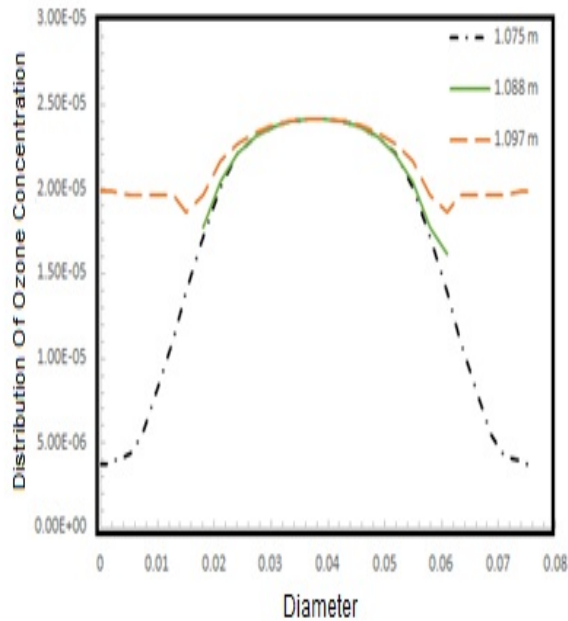


Figure 8- The radial distribution of baffled ozone concentration in a pivotal position before baffle (1.075), after (1.088) baffle, and middle of baffle (1.097)

Figure shows the central position before and after the baffle, indicating the motion of particles in the side and center of wall. In the center, there is the maximum concentration of ozone particles that is the radial distribution of particles is very low on the sides of wall, and the concentration of ozone particles is constantly ascending from wall to center. In the baffled system, we see the velocity of particles increases and there is slightly irregularity due to reduction in the area of entrance. Before entering to the baffle, particles have evenly distribution of ozone concentration (in radial direction) and after the baffle, this evenly distribution is disrupted. However, the motion of particles is fully upward.

7. List of symbols and abbreviations

Symbol	
Coefficient of drag	C_D
Diameter [m]	d_p
particle-particle modulus [-]	ϵ_p
particle-wall modulus [-]	ϵ_{pw}

Acceleration of gravity [m / s ²]	g
Radial distribution function [-]	E_r
Pressure tensor [Pa]	\mathbf{i}
Penetration coefficient of granular temperature [kg / m s]	k_{θ}
Gas-solid momentum exchange coefficient [kg / m ³ s]	β
Pressure [Pa]	P
Solid pressure [Pa]	P_s
Time [s]	t
Superficial gas velocity [m / s]	U
Temperature [K]	T
Coefficient of drag	C_D
Diameter of particles [m]	d_p

8. REFERENCE

- Jiang, p, Bi, Jean, R, Fan, L, 1991. Baffle effects on performance of catalytic circulating fluidized bed reactor. A. I. ch. E. Journal 37, 1392-1400.
- M. Syamlal, T. O, Brien, Derivation of a drag coefficient from velocity– voidage correlation, U.S. Dept. of Energy, Office of Fossil Energy, National Energy Technology Laboratory, Morgantown, West Virginia, April, 1987.
- Y. Zheng, X. Wan, Z. Qian, F. Wei, Y. Jin, Numerical simulation of the gas–particle turbulent flow in risers reactor based on $k-\epsilon-k_p-\epsilon_p-\Theta$ twofluid model, Chem. Eng. Sci. 56 (2001) 6813–6822.
- B.Chalermssinsuwan, P.Kuchonthara and P.piumsomboon, chem. Eng. Process 49 (2010)1144-1160.
- A. Neri, D. Gidaspow, Riser hydrodynamics: simulation using kinetic theory, AIChE J. 46 (2000) 52–67.
- S. V. Patankar. (1980), “*Numerical Heat Transfer and Fluid Flow*”, Hemisphere, Washington, DC.
- M. Syamlal, T. O, Brien, Derivation of a drag coefficient from velocity– voidage correlation, U.S. Dept. of Energy, Office of Fossil Energy, National Energy Technology Laboratory, Morgantown, West Virginia, April, 1987.
- S. Ogawa, A. Umemura, and N. Oshima. (1980), “ On the Equation of Fully Fluidized

- Granular Materials”. *J. Appl. Math. Phys.*, 31:483.
9. Liu, J., Particle and gas dynamics of high density circulating fluidized beds, PhD Thesis 2001, The University of British Columbia.
 10. J. Liu, J.R. Grace, H.T. Bi, Radial distribution of local particle velocity in a high density circulating fluidized bed riser, 7th Circulating fluidized bed, CSChE national conference, 2002, Ottawa.
 11. J. Liu, J. Grace, X. Bi, Novel multifunctional optical-fiber probe: II. high density CFB measurements, *AICHE J.* 49 (2003) 1421–1432.
 12. D. J. Gunn. (1978), “Transfer of Heat or Mass to Particles in Fixed and Fluidized Beds”, *Int. J. Heat Mass Transfer*, 21:467-476.
 13. S. A. Vasquez and V. A. Ivanov. (2000), “A Phase Coupled Method for Solving Multiphase Problems on Unstructured Meshes”, In *Proceedings of ASME FEDSM'00: ASME 2000 Fluids Engineering Division Summer Meeting*, Boston.